



12 ROLLER MILL

Overview

- 1,790 sq ft / 166 sq m
- £5,965 pcm
- First & Second Floor
- Capacity: 20 People

The scars tell the story. Uncompromising workspace with views of the Windmill and Cambridge.

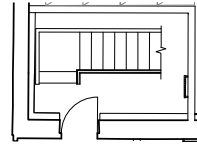
What's included in the occupancy fee:

- Rent and building insurance
- A low latency 1Gbps leased line with a 350Mbps cable broadband backup connection configured for automatic failover
- Internet connection protected by a business grade, managed firewall providing a private and secure network
- Use of outside meeting rooms and Stockroom amenities
- Secure and covered bicycle parking
- Car parking
- Electric car charging points

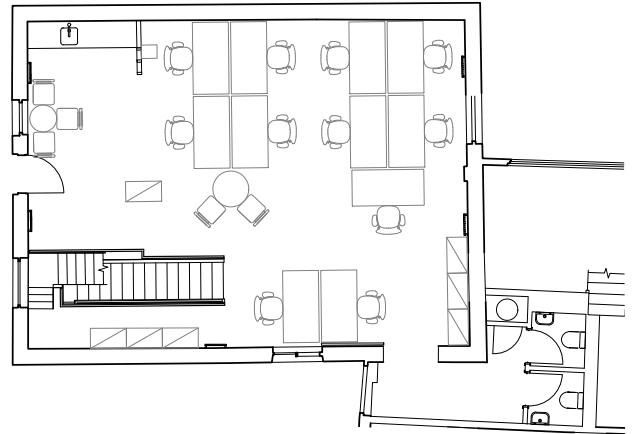
What's not included in the occupancy fee:

- Service fee
- Business rates (if applicable)
- Office cleaning
- Monthly usage of heat, power and internet

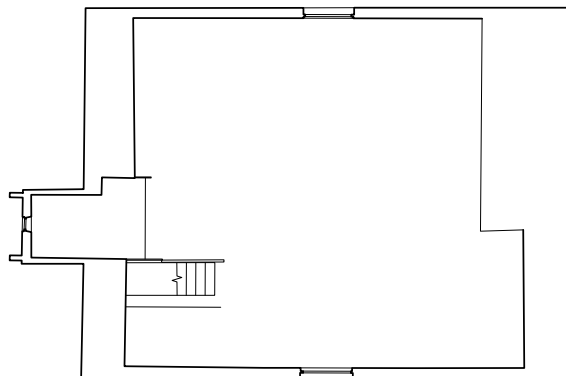
Ground Floor



First Floor



Second Floor





Chesterton Mill
French's Road, Cambridge CB4 3NP
chestertonmill.co.uk

For further information and to arrange a viewing please get in touch:



William Clarke
+44 (0)1223 347 294
WClarke@savills.com

Dan Brookes
+44 (0)1223 347 209
daniel.brookes@savills.com



Jack Vestey
+44 (0)7971 770 409
Jack.vestey@bidwells.co.uk